

Coming Together is a Beginning;
Keeping Together is Progress;
Working Together is Success.

~Henry Ford

**Wabash
County**

**Town
of
North
Manchester**

**City
of
Wabash**



Together we all succeed.

Economic Development Group of Wabash County, Inc.

2010 Annual Report

Economic Development Group of Wabash County, Inc.

2010 Membership List

Businesses/Organizations

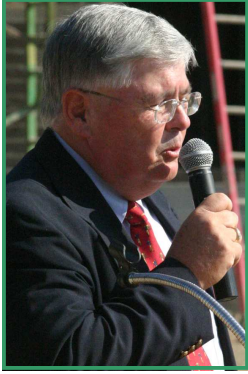
Abresist Corp
 Alumitech
 American Health Network
 Barnes & Thornburg LLP
 Beacon Credit Union
 Beauchamp and McSpadden
 Bott Mechanical Company, Inc.
 Brandt's Harley-Davidson, Inc.
 Bucheri McCarty and Metz LLP
 Briner Building, Inc.
 Bulldog Battery
 Charley Creek Foundation
 Community Foundation of Wabash County
 Crossroads Bank
 Clearflex Automotive Technologies, LLC
 Cyclone Manufacturing Company
 Dawes and Pugh CPAs, LLC
 Denney Motor Sales, Inc.
 Design Collaborative
 Die-Namic Ceramics - Detal Lab, Inc.
 Douglas C. Lehman, PC
 Dr. Daniel C. Croner
 DR. Robert Mattern DDS
 Duke Energy
 Edward Jones
 Edward Jones
 Family Dentistry of Wabash
 First Farmers Bank & Trust/Ken Perkins
 First Financial Bank
 First Merchants Bank
 Ford Meter Box Company, Inc.
 Friermood Tire and Alignment, Inc.
 Gilbert, Naragon, Terrill & Co., Inc.
 Global Precision Parts
 Grandstaff-Hentgen Funeral Service
 H.J. Umbaugh and Assoc. CPA
 Hagerman, Inc.
 Halderman Farm Management
 Heartland Career Center
 Honeywell Foundation
 Indiana American Water Company
 Innovative Ventures, LLC./Living Essentials
 Ivy Tech Community College
 J. Dean Gifford MD PC

Kellam, Inc.
 Kirtlan Automotive
 Knights Inn
 LifeMed, Inc.
 Lundquist Appraisals and Real Estate
 Lynn and Stein
 Main View Inn
 Manchester College
 Manchester Community Schools
 Manchester Main Street
 Manchester Tool and Die
 Market Street Bar and Grill
 Metal Source, LLC
 Metropolitan School District
 Midwest Eye Consultants, PC
 Miller Furniture
 MRF Financial/Metz Title Company
 Mutual Federal Savings Bank
 MYRRH Properties LLC
 N.O. Problem Seamless Gutters
 Northeast Indiana Regional Partnership
 NIPSCO
 Oswald and Thomas
 Pathfinders Services
 Paul Speicher Foundation
 Peabody
 Pleasant Home Farms, Inc
 Poet Biorefining
 Quality Electric, Inc.
 Randall Miller and Associates
 Rea, Logan and Co. LLC
 Realtors Assoc. of Centr. Indiana
 Schlemmer Brothers
 Star Excavating
 State Representative
 "the paper" of wabash county, inc.
 Thermafiber
 Tiede, Metz, & Downs
 Timbercrest
 United Consulting
 Vandermark Builders. Inc.
 Vieste, LLC
 Visionary Web Design, LLC
 Wabash City Schools

Wabash County
 Chamber of Commerce
 Wabash County Historical Museum
 Wabash County Hospital
 Wabash County Solid Waste
 Management District
 Wabash County YMCA
 Wabash Marketplace Inc
 Wabash Liquors, Inc
 Wabash Plain Dealer
 Wabash REMC
 Wells Fargo Bank
 Whites Residential and
 Family Services
 Yohe Reality

Individuals

Dr. Jim & Mary Anne	Bain
Mr Parker & Katie	Beauchamp
Ms. Marilyn	Custer-Mitchell
Mr. H.L. "Skip"	Daughtry
Ms. Marilyn	Ford
Dr. John	Gilpin
Mr. Robert	Halderman
Mr. Mike	Hensley
Mr. Jeff	Kellam
Mr. William	Konyha
Mr. Bob	Mason
Ms. Naomi	Porter
Mr. Lester	Templin



A Letter from the Chairman of the Board Mr. H.L. “Skip” Daughtry

It’s hard to believe a year has passed since our last Economic Development Group Annual Meeting. Looking back, we can see that with the passing of the year, much happened in Wabash County that will make a difference in our community for years to come.

2010 saw \$70.4 million in new capital investment county-wide which, more importantly, brought 472 jobs with an annual payroll of \$12.7 million. This payroll in turn will generate around \$369,000 in local income taxes.

The success we have seen recently will hopefully be just the beginning of project completions bringing more jobs to our county. We have two more verbal commitments from firms that, if things fall into place, will bring even more capital investment and jobs that are sorely needed. In addition, there are several other projects being actively pursued.

Throughout the process and progress of the past year there is one word that keeps surfacing as to why we have seen the successes we’ve had. That word is cooperation. We have seen the City of Wabash, Wabash County Government and the Town of North Manchester working together like never before with the realization that what is good for one part of the county is good for all of us. I felt that this cooperative spirit is very important and was gratified to see it in action, but it was really brought home to me in a recent meeting with a prospective new firm for our area.

During the meeting, the comment was heard from our prospects that they were amazed and thrilled to see this level of cooperation between our governmental agencies. Based on their reaction, it’s probably safe to assume that this is the exception rather than the norm.

We’ve made a lot of progress in the last few years here in Wabash County and have not been without our share of setbacks. Luckily for all of us our various county organizations have decided to work together. With this “can do” attitude, I believe the future is bright for economic development here in Wabash County.

I want to thank all our corporate, private and governmental members for their support this past year. I have enjoyed my time as Board Chair of EDG. It’s been exciting, educational and a real pleasure to work with Bill Konyha, Abby Hoy and my fellow EDG board members. I look forward to 2011 and am very excited about our opportunities.

Sincerely,

H.L. “Skip” Daughtry
EDG Chairman of the Board



A Letter from the President/CEO **Mr. William S. Konyha**

2010 was in many ways a banner year for Wabash County and the EDG. Our “score card” for the year clearly establishes the progress made during the first four years of operations as the Economic Development Group of Wabash County, Inc. During each of our first four years, we had at least one win and in the process created an increasingly strong market presence and awareness among critical site selection consultants. More importantly, we set the table for continued growth and diversification.

EDG efforts during 2010 continued implementation of strategies designed to capitalize upon our strengths as a community and to focus upon efforts to attract new investment consistent with appropriate opportunities. The total new payroll of approximately \$12.75 million generated by EDG attraction projects provides new local income taxes, which benefit every property tax payer and Wabash County resident.

During the worst economic downturn that anyone can remember, EDG and Wabash County fared better than most similar sized communities in Indiana. We increased our efforts to expand and diversify our economy while focusing upon target industries that need to be in places like Wabash County. We also supported the development of infrastructure critical to our transition to a 21st century economy.

One of the most significant developments during the past four years is the willingness of our elected officials to work with one another, across jurisdictions for the betterment of all Wabash County residents. We are well served by leadership in the City of Wabash, North Manchester, and Wabash County who understand that we compete in a global economy. That the dollar does not respect lines drawn on a map, that cooperation with one another, across county lines, and within a region is essential to the economic well-being of the people and businesses of Wabash County. The ability to cooperate and support each other has already led to more than \$20 million in private capital investment and the creation of 100 jobs. Without this cooperation, cross investment, and realization that a business attracted to any part of the county is beneficial to the entire county it would be much more difficult to meet the goals outlined in our mission.

At the beginning of 2011, EDG is working with ten-business attraction projects, some are opportunities generated through our association with the North East Indiana Regional Partnership, in which Wabash County is a leader and co-equal partner, and others generated by IEDC, Duke Energy, or EDG staff. A state certified “Shovel Ready” business park, fiber optic infrastructure to the premises, and inter-local government cooperation are making site selectors and others take notice of Wabash County. With our eyes removed from the rear - view mirror and firmly affixed on the horizon, we continue our efforts to expand and diversify our economy.

Economic Development Group of Wabash County, Inc.
2011 Board of Directors



Not Pictured: Ken Perkins

Mr. Skip Daughtry, Chairman

Mr. Ken Perkins, Vice Chair

Mr. Dan Hannaford, Secretary

Mr. Ralph Naragon, Treasurer

Mr. Brian Haupert, Appointed

Mayor Bob Vanlandingham, Appointed

Mr. Jeff Kellam

Mr. Rob Pearson

Mr. Ron Kerby

Revolving Loan Funds

At the close of 2010 EDG had 5 active Revolving Loans: Lynn's Custom Butchering (Wabash), Visionary Web (Wabash), Iron Customs (Urbana), MYRRH Properties, LLC. (Wabash) and KenapocoMocha Coffee and Pastry Shop (North Manchester).

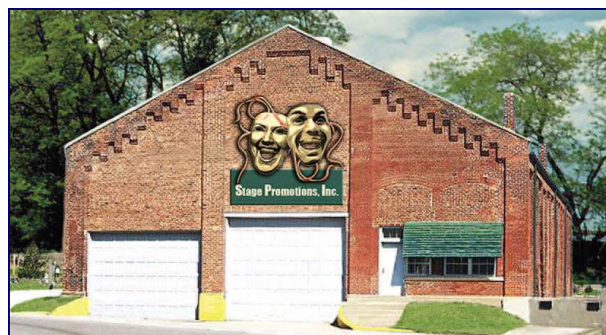
Well Grounded, LLC (DBA KenapocoMocha Coffee and Pastry Shop) received its working capital loan in 2009 for the amount of \$16,000. They started off with a sound business plan and a very unique ownership structure which consisted of community members purchasing shares of the business making this eatery truly a "Community Owned" project. They have found their spot in the local economy selling specialty coffees, teas, and other treats.



One of our longest and most successful loans is with **Visionary Web/Computers**. This loan was started in 2005 and has continued to grow and change along with the business itself. Visionary Web is a true 21st

Century business with deep roots in the Wabash Community. Working with local businesses such as Tiede, Metz and Downs, Halderman Farm Management and Real Estate, The Honeywell Center and even EDG's own website they bring much added value to our community.

In 2009 EDG completed a loan guarantee with **Stage Promotions** when they relocated from Florida to Wabash. This company works in theater promotions and is a strong match for the economic development strategy used to encourage the expansion of the arts and entertainment industries in Downtown Wabash. Working with local financial institution First Merchants Bank EDG originally guaranteed the loan for the amount of \$48,750. During 2010 EDG partnered with Wabash Marketplace, Inc. to guarantee the loan together and free up some additional funds for our RLF. Currently we are guaranteeing the loan for the amount of \$34,406.



These loans totaled a \$94,795 in outstanding direct loans, \$34,406 in loan guarantee and \$40,403 available for new loans or loan guarantees. The total cash resources invested in the RLF was \$185,199 with \$50,000 in USDA grant funds available.

Business Attraction

Novae Corp.

Gov. Mitch Daniels was on hand to welcome Novae Corp. of Markle, Ind., to its new facility in North Manchester. The Sure-Trac Trailer Division of Novae, “one of the fastest growing privately held companies in the U.S.,” recently purchased the former Dexter Axle building on State Road 114 east of North Manchester and currently employs approximately 80 workers. Novae invested \$2.1 million in the new venture. In addition to buying the 88,000-square-foot facility at 11870N 650E and the 73 acres it sits on, Novae will spend \$818,500 on building improvements, \$236,000 on new equipment and \$75,000 for its own wastewater treatment plant. The average salary at the Novae plant will be \$15.60 per hour plus benefits.



Gov. Mitch Daniels along with officials from Novae and Wabash “break ground” at the new North Manchester location.

In 2006 Novae Corp. was named by Inc Magazine as one of the fastest growing privately held companies in the U.S. It ranked No.392 on the Inc 500 list that year and was also listed in 2007 and 2008. Novae has averaged more than 60 percent growth per year for the last nine years. The company was recently recognized at the NATM (National Association of Trailer Manufacturers) for two things: (1) Largest increase in market share and (2) the only manufacturer (of the top 50) to increase actual unit volume for 2009 (over 2008). Novae grew its business by about 13 percent in 2009. The North Manchester location gives Novae three locations. Company officials expect revenues this year to be about \$30 million. Dexter Axle closed the North Manchester plant about 18 months ago to consolidate its operations in Noble County.

Cinergy MetroNet

In 2009 Cinergy Metronet announced its intention to invest up to \$20 Million to install fiber optic services in the City of Wabash and in the Town of North Manchester. In 2010 we saw those plans go into action. In August the TIF bonds supporting the installation of fiber optics within the City of Wabash and in North Manchester were closed. Access to this generation of fiber is critical to efforts to redevelop our economy into a 21st century, knowledge based model. Bond Council advises that this is the first time in the State of Indiana that three units of local government cooperated with one another authorizing one entity to assume the lead and act on behalf of all of the units. For the first time in Indiana, a city, county, and town acted in concert,



without regard for lines on a map, and supported an economic development project that will ultimately have wide ranging impact within the entire region.

This project and the partnership between the elected officials of Wabash County, the City of Wabash, and North Manchester are helping us to advance our transition to a knowledge based economy.

Business Retention / Expansion

Living Essentials

In 2010 Living Essentials put a plan into action that would more than tripling the size of its 200,000-square-foot national distribution center and warehouse in the Wabash North Industrial Park. Living Essentials, which also has a production facility and its research and development center at 200 Bond St., is the maker of 5-Hour Energy, the nation's leading energy shot brand.

The 450,000-square-foot expansion project at the site of the national distribution center, located at the west end of Wedcor Avenue, will increase Living Essentials' physical presence in Wabash to 800,000 square feet. The investment in the community, struggling to overcome the devastating effects of the downturn in the national, state and local economy, will result in an increase from \$2.6 million, when the company moved to Wabash in 2007 to more than \$30 million. The new capital improvements involved a \$10 million investment on the building and a \$7 million investment in equipment. Six new bottling lines will eventually be installed in the addition, giving the distributor of 5-Hour Energy 12 lines. He also said officials expect to hire 60 employees at the new production facility and 5-10 people at the enlarged distribution center.

<p>WHY MOVE TO WABASH COUNTY?</p> <p>"EDG proposed we build at the west end of the North Industrial Park and then went to work to make it happen."</p>	<p>INCENTIVES</p> <p>10-YEAR TAX ABATEMENT FOR REAL & PERSONAL PROPERTY</p> <p>\$250,000 TO EXTEND ROADWAYS & UTILITIES (SEWER & WATER)</p> <p>\$218,000 BY DONATION OF 30 ACRES OF LAND</p>
	<p>KEY PARTNERS</p> <p>Economic Development Group of Wabash County City of Wabash</p>
	<p>SITE DETAILS</p> <p>200,000 TOTAL SQUARE FEET</p> <p>30 acres LOT SIZE 24 feet CEILING HEIGHT 24 DOCK DOORS</p> <p>Automatic Lighting System, Energy-Efficient Insulation GREEN BUILDING ELEMENTS</p>

When the company commenced operations in Wabash in 2007 they promised to hire 36 employees. At the beginning of 2009 that figure stood at 99. Today, the company reports around 250 employees, 140 full-time and in excess of 100 temporary workers.

Article from



February 16, 2010

Energy drink maker to expand Wabash production

By Tom Spalding
tom.spalding@indystar.com

A boost in business has been good for the maker of the 5-Hour Energy beverage, leading to new hires in Indiana.

Farmington Hills, Mich.-based Living Essentials, which employs 130 at a production and distribution operation in Wabash, will expand its operations there, creating up to 36 new jobs by 2012.

<http://www.indystar.com/business> > **MORE COVERAGE:** A roundup of Indianapolis-area business news and state updates.

The Indiana Economic Development Corp. made today's announcement.

Introduced in 2004, 5-Hour Energy has grown from startup to 2009 sales of more than \$300 million, said Karl Smith, general manager of Living Essentials' Wabash operations, in a statement.

"As we continue to grow we have selected Wabash, Ind. for our expansion due to its high-quality, highly skilled workforce and the outstanding state and local support provided to entrepreneurial companies."

Since putting a facility in Wabash in 2007, additional production lines and the company's research and development operations have come to the North Central Indiana site. 5-Hour Energy is sold in retail and convenience stores throughout the United States and Canada.

Wabash is about 100 miles northeast of Indianapolis.

According to Controller Jim Haller, Living Essentials currently has two 10-hour shifts working Monday through Thursday and a weekend shift working Friday through Sunday. The company is currently turning out about 1.5 million bottles per day and hopes to get to 2 million a day at the Bond Street facility.

Business Expansion/Retention

J.M. Reynolds Oil Company

In 2010 a transaction was completed that enabled J.M. Reynolds Oil to expand its operations in the Wabash Industrial Park. The project returned 6 acres of ground to the property tax roles and may one day facilitate the redevelopment of a significant part of the City of Wabash.



Much of the remaining ground in the Wabash Industrial Park is nearly impossible to develop. Utility easements, including large gas and electric easements, drainage issues and terrain render large tracts unsuitable for development. This project was able to be developed in part within the Duke Energy easement. A drive within their 100 foot wide easement made it possible to develop a tract sufficient to permit use by Reynolds.

In this case time was of the essence. We pride ourselves at being able to move at the speed of business, which is one of the great competitive advantages that we have in the region. We were able to undergo reviews by the City Attorney, Plan Commission Attorney, conduct and secure approvals of the Wabash Redevelopment Authority and the City Economic Development Commission within two weeks.

Bulldog Battery

Norm Benjamin, president of Bulldog Battery, announced a new electric battery, which he designed “from scratch,” is being produced here. John Johnson and Adam Goldstein of ClearFLEX moved their operation from Indianapolis into Bulldog’s Precision Battery Fabrication facility in the Wabash North Industrial Park. The plan was to convert gas-driven cars to electric vehicles. They shared their battery ideas with Benjamin, and he came up with a better idea. ClearFLEX is still doing its thing. Benjamin, however, is branching out.

In addition to producing industrial-strength batteries, Bulldog is producing batteries for all electric vehicle applications – golf carts, floor scrubbers, people movers, merchandise movers, scissor lifts, trolling motors and more. The new Max-Power batteries are being used by American Airlines in Dallas, a Macy’s warehouse in Atlanta, coal mines in West Virginia and Kentucky and local golf courses. Benjamin said 90 percent of the components in Max-Power batteries are made in Wabash at Bulldog’s two facilities. The company currently employs about 100 workers.

Charley Creek Inn

Additional Accomplishments

Despite a less than ideal economic environment EDG still went about the task of trying to make Wabash County as appealing to site selectors as possible. Here are a few major accomplishments that did just that in 2010.

- The President urged the Wabash County Board of Commissioners to authorize an application to become part of the Fort Wayne Foreign Trade Zone headquartered at the Fort Wayne airport. This was approved and will provide cost efficiencies for Living Essentials, Ford Meter Box, Thermafiber and other companies that either export products or import materials.
- The staff prepared the application and managed the entire process that resulted in the Wabash Business Park designation as shovel ready by the Indiana Economic Development Corp. The 242 acre site is the 6th largest in the state. In 2011 the staff will submit it to Northeast Indiana Regional Partnership for its 3rd party certification process. The North Manchester Industrial Park will also be submitted to both entities for certification.
- The staff completed the Cinergy MetroNet TIF District that included the Wabash Industrial Park, the Wabash Business Park, the Duke Energy property at the southwest corner of the intersection of State Road 13 and U.S. 24, and the North Manchester Industrial Park. This will facilitate repayment of the TIF Bonds for Cinergy MetroNet but more importantly it establishes the three sites as TIF District without any cost to local units of government.
- A separate TIF District was created to benefit the Charley Creek Inn. This TIF District along with the Cinergy MetroNet TIF District have thus far resulted in the creation of 87 jobs. Wabash Marketplace loaned RECAP funds to Charley Creek Inn (which have already been repaid) but EDG secured the RECAP funds from Indiana Housing and Community Development Agency and OCRA.
- The Wabash County Council and the North Manchester Town Council each voted to establish tax abatement policies that are identical to that of the City of Wabash. Each established a Tax Abatement Committee similar to the Incentive Authority adopted by the City of Wabash and each adopted the Evaluation of Proposed Abatements identical to that of the city. EDG chairs the committee and will make recommendations to them.
- EDG staff supported affiliation with Region 3A as our regional planning agency. The choice was made because EDG must have a regional planning affiliation if we are to secure certain grants from the USEDPA and other agencies of the federal and state governments. Although EDG staff secured the \$500,000 grant of Disaster Relief Funds (HUD) from the Indiana Office of Community and Rural Affairs, that was used as one part of the incentive package for Novae Corp., future grants from the state and federal government will be made based on regional planning priorities. This why we had to align ourself with a group such as Region 3A

2010 Balance Sheet

ASSETS

Current Assets		
First Merchants	\$	14,347.32
CR Checking and M. Market		32,483.05
Loan Guaranty CD- Fst Merchant		36,194.84
Mutual Fed CD		50,000.00
Petty Cash		50.00
 Total Current Assets		 133,075.21
 Property and Equipment		
Furniture & Office Equip.		11,164.37
A/D - Furniture & Office Eq.		(10,502.52)
 Total Property and Equipment		 661.85
 Other Assets		
Receivable (USDA)		94,795.19
Land Development Costs		123,385.40
 Total Other Assets		 218,180.59
 Total Assets		 \$ 351,917.65

LIABILITIES AND NET ASSETS

Current Liabilities		
Konyha Health Ins Payable	\$	1,990.06
General Deductions Acct.		1,039.84
Prepaid Membership Individual		2,000.00
Prepaid Memberships Cooperate		10,770.00
AHOY Health Ins Payable		47.15
Federal Withholding Tax Payabl		1,750.45
Social Security Tax Payable		419.88
Medicare Withholding Tax Pay		109.60
State Withholding Taxes Payabl		712.29
Local Withholding Taxes Payabl		425.29
Participation Loan		16,000.00
 Total Current Liabilities		 35,264.56
 Total Liabilities		 35,264.56
 Net Assets		
Capital Improvement Fund		6,904.20
Retained Earnings		320,739.44
Revolving Loan Fund		48,068.72
Net Income		(59,059.27)
 Total Net Assets		 316,653.09
 Total Liabilities & Net Assets		 \$ 351,917.65

2010 Income to Budget Statement

	Year to Date Actual	Year to Date Budget	Year to Date Variance
Revenues			
EDC Fee Income	\$ 30,000.00	\$ 15,000.00	15,000.00
RLF Fee Income	0.00	1,000.00	(1,000.00)
Fee Income	67,500.00	0.00	67,500.00
Individual Contributions	7,213.96	0.00	7,213.96
City of Wabash CEDIT	40,000.00	70,000.00	(30,000.00)
County of Wabash CEDIT	231,000.00	260,000.00	(29,000.00)
Town of NM CEDIT	207,500.00	215,000.00	(7,500.00)
Corporate Contributions	22,500.00	52,953.89	(30,453.89)
Corporate Memberships	34,928.82	40,000.00	(5,071.18)
Individual Memberships	3,500.12	5,000.00	(1,499.88)
Fst Merchants Interest Earned	1.71	0.00	1.71
Revolving Loan - Interest	4,821.07	3,910.00	911.07
Crossroads Checking Interest	365.34	1,000.00	(634.66)
CD - Interest Income	2,767.56	0.00	2,767.56
Grants/501	7,120.00	14,000.00	(6,880.00)
Miscellaneous Income	8,619.65	1,660.00	6,959.65
Total Revenues	667,838.23	679,523.89	(11,685.66)
Cost of Sales			
Total Cost of Sales	0.00	0.00	0.00
Gross Profit	667,838.23	679,523.89	(11,685.66)
Expenses			
Marketing	23,694.49	24,033.00	(338.51)
Salaries and Wages	181,582.70	181,740.00	(157.30)
Payroll Taxes	154.00	0.00	154.00
Employer Social Security	8,787.92	9,734.31	(946.39)
Employer Medicare	2,739.73	2,276.58	463.15

2010 Income to Budget Statement (cont)

Contract Labor	610.00	3,200.00	(2,590.00)
Consultant Fees	30.00	0.00	30.00
Bad Debts	38,025.93	0.00	38,025.93
Grant Expense	1,960.20	0.00	1,960.20
Dues & Membership	2,069.60	1,500.00	569.60
Insurance - General	5,411.00	4,500.00	911.00
Interest Expense	126.38	0.00	126.38
Professional & Legal Fees	7,490.17	8,000.00	(509.83)
Options	6,847.00	0.00	6,847.00
Maintenance	785.00	0.00	785.00
Meeting Expense	2,862.56	2,400.00	462.56
Mileage	5,276.75	3,600.00	1,676.75
Miscellaneous Expense	410,777.76	411,200.00	(422.24)
Mis. Building Expense	2,214.15	2,500.00	(285.85)
Site Visit	22.00	0.00	22.00
Postage & Federal Express	1,087.86	1,440.00	(352.14)
Rent Expense	8,100.00	8,100.00	0.00
Copier Agreement	2,652.68	0.00	2,652.68
Office Supply Expense	1,964.19	2,500.00	(535.81)
Meals/Entertainment	2,254.26	3,600.00	(1,345.74)
Publication/Subscription	444.00	300.00	144.00
Telephone/Internet Service/Fax	3,988.66	3,600.00	388.66
Travel & Lodging	2,268.13	2,800.00	(531.87)
Computer/Website	2,670.38	2,500.00	170.38
Total Expenses	726,897.50	679,523.89	47,373.61
Net Income	(\$ 59,059.27)	\$ 0.00	(59,059.27)

Economic Development Group of Wabash County, Inc.

**Creating Economic and Employment Opportunities for the
People and Businesses of Wabash County.**



EDG is a Proud Member of

NORTHEAST INDIANA 
REGIONAL PARTNERSHIP

