

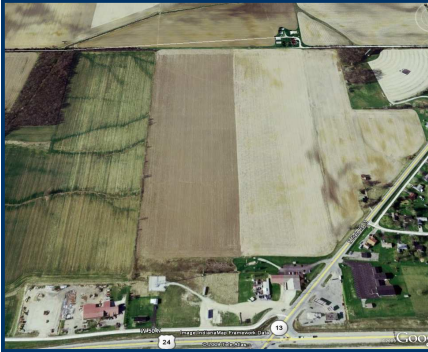


Economic Development Group of Wabash County

August 2009

Dedicated to Creating Economic and Employment Opportunities for the People and Businesses of Wabash County.

Business Park Annexation Bill Passed



**Above:
Annexed area and surrounding land.**

Bill Konyha, President and CEO of the Economic Development Group of Wabash County, announced in late July that attached to Indiana's new two-year budget bill was an amendment allowing Wabash officials to annex the 221.6 acres located north of U.S. 24 and west of Ind. 13.

Annexation will allow the city to provide services like police and fire protection to businesses that locate in the new park as well as extend city sanitary and storm sewers as part of the necessary infrastructure. Konyha gave State Rep. Bill Ruppel, R-North Manchester, the biggest share of the credit for getting the amendment through to passage and signature by Gov. Mitch Daniels.

"This is important to us as most business attraction projects include companies that require fulltime, paid police- and fire-protection service," Konyha said. "They require these features because they have a serious impact on their property and casualty insurance costs."

In the beginning, House Bill 1447, a bill on local government matters, included a section amending the state code to permit Wabash to annex non-contiguous land for purposes of industrial development. Ruppel negotiated the language into the Senate bill after it passed the House. The Senate version of the bill was different, but it came out of the House-Senate conference committee, which included Sen. Gary "Doc" Dillon, R-Pierceton, who also represents part of Wabash County.

"The Senate approved the conference committee report," Konyha said, "and sent it back to the House. It was the next bill to be considered when the speaker of the House (Rep. Patrick Bauer, D-South Bend) adjourned the House without passing the state budget, and essentially killing a number of bills, including HB1447."

When the Legislature reconvened, Ruppel got the language inserted in the budget bill. Officials of EDG, the Wabash County Chamber of Commerce and Wabash Mayor Bob Vanlandingham urged Gov. Mitch Daniels, Lt. Gov. Becky Skillman, State Treasurer Richard Mourdock, and many other members of the Legislature to support the language in the budget bill.

The Wabash City Council approved the appropriation of \$1.667 million earlier this year to purchase the two parcels that make up the new business park. The deeds are in the process of being transferred. The park is bounded by Ind. 13 on the east, County Road 50N on the south, County Road 100N on the north and County Road 100W (Dowd Road) on the west. The land cannot be annexed before Jan. 1, 2010, because federal law does not allow annexation in the year prior to a census.

EDG Board of Directors

Skip Daughtry, Chair

Ken Perkins, Vice Chair

Dan Hannaford, Secretary

Ralph Naragon, Treasurer

Robert Vanlandingham

Jeff Kellam **Rob Pearson**

Ron Kerby **Brian Hauptert**

Actions Of The Board

Economic Development Group's monthly board meeting was held on August 11th at 7:30 am in the EDG Board Room. The board reviewed minutes from the July Board Meeting, monthly financial reports, loan portfolio and the President's Report. No New Business Items (NBI) were on the agenda.

After regular business was concluded the board welcomed Shelly Leifer from The Community Foundation of Wabash County to speak to the board about the 21st Century Scholarship program, a program that already exists in Wabash County to assist students in a certain income bracket to pay for post high school education. After a brief Power Point Presentation Ms. Leifer opened the floor up for questions from the board.

The meeting was adjourned at 9:10 am.

President's Report August 2009



William S.
Konyha
President

These items were reported on by the President:

- **Bass and Buck** - The President has been in talks with Bass and Buck about a trigger locking system that they have created. B & B hopes to manufacture the lock at their location in Wabash County and has already been taking orders. The President has met with them on several occasions and has deemed them credit worthy for participation in the Revolving Loan Fund.
- **Cinergy MetroNet, Inc** - The purchase is completed on 146 W. Market Street and we have visited North Manchester to inspect possible buildings for purchase including some additional ground for the Manchester Economic Development Corporation (MEDCOR). In addition to bringing fiber to Wabash and North Manchester Cinergy Metronet is seeking financing to bring wireless to the balance of the County. This \$20 million investment will bring approximately 16 full time jobs and will be very significant to the future development of Wabash County, as fiber is badly needed in the new business park.
- **The Kalamazoo Promise** - Board member Jeff Kellam led a group of interested members of EDG on a trip to visit the offices of The Kalamazoo Promise. Dr. Janice Brown, who spoke at our annual meeting, discussed in greater detail exactly how the Promise works and some of the steps that Wabash would have to take to get a program like it started.



EDG would like to welcome
its new members:

American Health Network

Rea, Logan and Co. LLC

Timbercrest Senior Living

Thank you for your support of
the Economic Development
Group of Wabash County!



Sign up for the members only site!

In last month's newsletter we wrote about the launch of the new "Members Only Section" in our website. If you haven't signed up yet, or are a new member, be sure to sign up today so you can enjoy some of the privileges below:

- Messages straight from the Desk of the President & CEO of Economic Development Group, Bill Konyha
- As well as message from his Executive Assistant, Abby C. Hoy
- View a full list of EDG Members with complete contact information
- Full Board Packet including minutes, financial statements, President's Reports, and New Business Items
- An area for members to ask questions or make comments about upcoming events and projects

How can current members get into this area? It's easy! Members just need to visit our website at www.edgwc.com and click on the "Members Only" button on the top right side of the screen. This will take them to a page where they can create an account and their own personal password. After the account and password has been approved they are free to visit as often as they like. All accounts will reset at the first of the year and will be available again once annual dues are paid.

If you are not a member and are interested to see what the site has to offer please give us a call to get 2009 pro-rated pricing on a membership! 1-260-563-5258